

MOSA

Switch the power on

3000

r p m



BROCHURE
GENERATING SETS 3000 rpm



NAKED

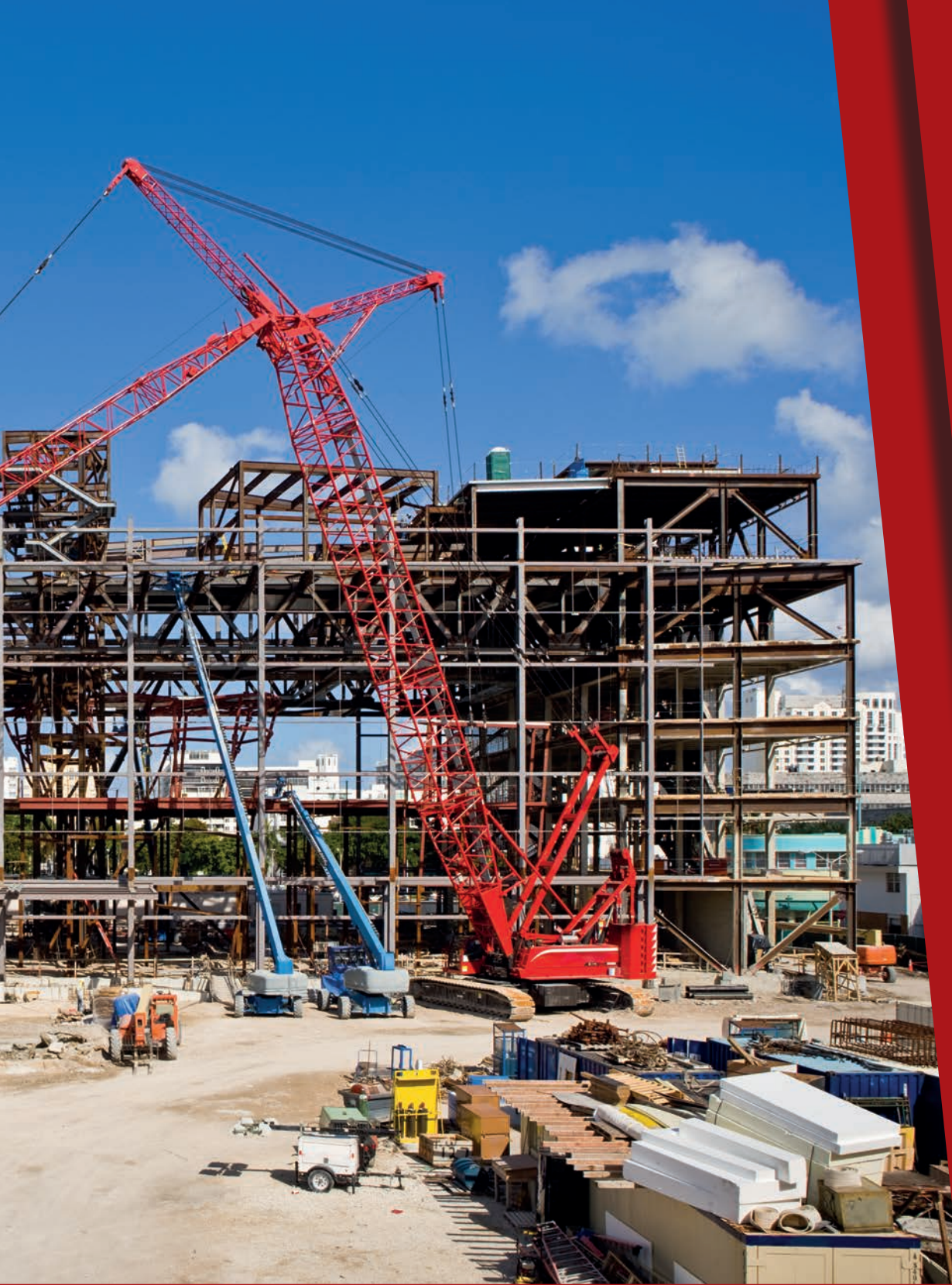
» GE 3500 HBM	Pag. 6
» GE 3500 KBM	Pag. 6
» GE 4000 KDM	Pag. 6
» GE 5000 BBM	Pag. 7
» GE 5000 HBM	Pag. 7
» GE 6000 YDM	Pag. 7
» GE 6500 YDT	Pag. 8
» GE 7000 BBM	Pag. 8
» GE 7000 HBM	Pag. 8
» GE 8000 BBT	Pag. 9
» GE 8000 HBT	Pag. 9

RANGE S

» GE S-5000 BBM	Pag. 12
» GE S-5000 HBM	Pag. 12
» GE S-6000 YDM	Pag. 12
» GE S-6500 YDT	Pag. 13
» GE S-7000 BBM	Pag. 13
» GE S-7000 HBM	Pag. 13
» GE S-8000 BBT	Pag. 14
» GE S-8000 HBT	Pag. 14

OPEN FRAME

» GE 10000 HZDM	Pag. 16
» GE 11000 HBS	Pag. 16
» GE 12000 HZDT	Pag. 16
» GE 12054 HZDT	Pag. 17
» GE 13000 HBS	Pag. 17
» GE 13054 HBS	Pag. 17
» GE 14000 KD	Pag. 18



TOTAL COVER

- » GE 12000 KSX/GS.....Pag. 20
- » GE 14000 KSX/GS.....Pag. 20
- » GE 20000 KS/GS.....Pag. 20

RANGE SX

- » GE 4500 HSX.....Pag. 22
- » GE SX-6000 YDM.....Pag. 22
- » GE SX-6500 YDT.....Pag. 22
- » GE 7000 HSX.....Pag. 23
- » GE 7500 HSX.....Pag. 23
- » GE SX-7554 YDT.....Pag. 23

RANGE

PROUDLY “MADE IN ITALY”

For more than 50 years, MOSA has been focusing on the performance and reliability of its products. Experience and commitment to innovation has positioned MOSA as a world reference in the design and construction of machines that fulfil the requirements of power generation and welding: comprising generators, engine driven welders and lighting towers.



The ISO 9001 certified process utilised by MOSA uses the most advanced technology and personnel with specialised expertise in all phases of the process that, starting from design, extend to the selection of raw materials and supplies, to the production of the various components and their assembly, as well as the strict tests and functional testing of the finished product; all of which represent the traditional characteristics of “Made in Italy”.

RANGE NAKED



“OIL ALERT” SYSTEM

The “Oil Alert” system is designed to prevent engine damage caused by insufficient oil in the sump. This system automatically shuts down the engine and prevents it from starting before the oil level drops below the safety limit.

DESIGN WITH ESSENTIAL SHAPES

Made with rectangular tubular, in aluminum gray color, the structure that characterizes this new series of professional generators is entirely “open frame”.



SINGLE-PHASE AND THREE-PHASE ALTERNATORS OF EXCELLENCE

The reliability of the generators of the Naked series is completed with single and three phase alternators

GE 3500 HBM



- Engine shut down for low oil level (oil alert)
- Sockets: 2x230V 16A 2P+T Schuko
- Overload thermal shut off
- Battery charger 12 Vcc with fuse protection
- Protective frame
- Portable

4-STROKE ENGINE, OHV, NATURAL ASPIRATED

Model	HONDA - GX 200
Fuel consumption (75% of PRP)	1.1 l/h
Tank capacity	3.1 l
Alternator	Synchronous, single-phase, self-excited, self-regulated, brushless
Stand-by single-phase power	3.2 kVA (2.9 kW) / 230V / 13.9 A
PRP single-phase power	2.9 kVA (2.6 kW) / 230V / 12.6 A
Dry weight	45 Kg
Dimensions (LxWxh) mm	650x490x520
Pressure acoustic	70 dB(A) @ 7m



air cooled



petrol



single-phase



manual recoil



- Engine shut down for low oil level (oil alert)
- Sockets: 2x230V 16A 2P+T Schuko
- Overload thermal shut off
- Battery charger 12 Vcc with fuse protection
- Protective frame
- Portable

GE 3500 KBM

4-STROKE ENGINE, OHV, NATURAL ASPIRATED

Model	KOHLER CH 270 COMMAND PRO
Fuel consumption (75% of PRP)	1.2 l/h
Tank capacity	4 l
Alternator	Synchronous, single-phase, self-excited, self-regulated, brushless
Stand-by single-phase power	3.2 kVA (2.9 kW) / 230V / 13.9 A
PRP single-phase power	2.9 kVA (2.6 kW) / 230V / 12.6 A
Dry weight	45 Kg
Dimensions (LxWxh) mm	650x490x520
Pressure acoustic	71 dB(A) @ 7m



air cooled



petrol



single-phase



manual recoil



- Sockets: 1x 230V 16A 2P+T CEE
1x 230V 16A 2P+T Schuko
- Overload thermal shut off
- Battery charger 12 Vcc with fuse protection
- Protective frame
- Portable

GE 4000 KDM

4-STROKE ENGINE, DIRECT INJECTION, NATURAL ASPIRATED

Model	KOHLER - KD350
Fuel consumption (75% of PRP)	1 l/h
Tank capacity	4.3 l
Alternator	Synchronous, single-phase, self-excited, self-regulated, brushless
Stand-by single-phase power	4 kVA (3.6 kW) / 230V / 17.4 A
PRP single-phase power	3.7 kVA (3.3 kW) / 230V / 16 A
Dry weight	64 Kg
Dimensions (LxWxh) mm	650x490x520
Pressure acoustic	74 dB(A) @ 7m



air cooled



diesel



single-phase



manual recoil

GE 5000 BBM



- Engine shut down for low oil level (oil alert)
- Output sockets: 1x230V 16A 2P+T CEE
1x230V 16A 2P+T Schuko
- Overload thermal shut off
- Battery charger 12 Vcc with fuse protection
- Protective frame
- Portable

4-STROKE ENGINE, OHV, NATURAL ASPIRATED

Model	B&S - XR1450
Fuel consumption (75% of PRP)	1.9 l/h
Tank capacity	5.3 l
Alternator	Synchronous, single-phase, self-excited, self-regulated, brushless
Stand-by single-phase power	5 kVA (4.5 kW) / 230V / 21.7A
PRP single-phase power	4 kVA (3.6 kW) / 230V / 17.4A
Dry weight	57 Kg
Dimensions (LxWxh) mm	650x490x520
Pressure acoustic	74 dB(A) @ 7m



air cooled



petrol



single-phase



manual recoil

GE 5000 HBM



AVR
optional

- Engine shut down for low oil level (oil alert)
- Output sockets: 1x230V 16A 2P+T CEE
1x230V 16A 2P+T Schuko
- Overload thermal shut off
- Battery charger 12 Vcc with fuse protection
- Protective frame
- Portable

4-STROKE ENGINE, OHV, NATURAL ASPIRATED

Model	HONDA GX 270
Fuel consumption (75% of PRP)	1.6 l/h
Tank capacity	5.3 l
Alternator	Synchronous, single-phase, self-excited, self-regulated, brushless
Stand-by single-phase power	4.9 kVA (4.4 kW) / 230V / 21.3A
PRP single-phase power	4 kVA (3.6 kW) / 230V / 17.4A
Dry weight	56 Kg
Dimensions (LxWxh) mm	650x490x520
Pressure acoustic	71 dB(A) @ 7m



air cooled



petrol



single-phase



manual recoil

GE 6000 YDM



- Overload thermal shut off
- Voltmeter
- Output sockets: 1x230V 32A 2P+T CEE
1x230V 16A 2P+T CEE
- Circuit breaker
- Protective frame

4-STROKE ENGINE, DIRECT INJECTION, NATURAL ASPIRATED

Model	YANMAR L 100 V
Fuel consumption (75% of PRP)	1 l/h
Tank capacity	5.5 l
Alternator	Synchronous, single-phase, self-excited, self-regulated, brushless
Stand-by single-phase power	5.7 kVA (5.1 kW) / 230V / 24.7A
PRP single-phase power	5 kVA (4.5 kW) / 230V / 21.7A
Dry weight	93 Kg
Dimensions (LxWxh) mm	770x520x650
Pressure acoustic	74 dB(A) @ 7m



air cooled



diesel



single-phase



manual recoil

GE 6500 YDT



- Output sockets: 1x 400V 16A 3P+N +T CEE
1x 230V 16A 2P+T CEE
- Circuit breaker
- Protective frame
- Voltmeter
- Portable

4-STROKE ENGINE, DIRECT INJECTION, NATURAL ASPIRATED

Model	YANMAR L 100 V
Fuel consumption (75% of PRP)	1 l/h
Tank capacity	5.5 l
Alternator	Synchronous, three-phase, self-excited, self-regulated
Stand-by three-phase power	6.5 kVA (5.2 kW) / 400V / 9.3A
PRP three-phase power	5.7 kVA (4.6 kW) / 400V / 8.2A
PRP single-phase power	4 kVA / 230V / 17.3A
Dry weight	97 Kg
Dimensions (LxWxh) mm	770x520x650
Pressure acoustic	74 dB(A) @ 7m



air cooled



diesel



three-phase



manual recoil

GE 7000 BBM



- Engine shut down for low oil level (oil alert)
- Output sockets: 1x230V 32A 2P+T CEE
1x230V 16A 2P+T CEE
- Circuit breaker
- Protective frame
- Voltmeter
- Portable

4-STROKE ENGINE, OHV, NATURAL ASPIRATED

	WITHOUT AVR	WITH AVR
Model	B&S - XR2100	
Fuel consumption (75% of PRP)	2.7 l/h	
Tank capacity	6.6 l	
Alternator	Synchronous, single-phase, self-excited, self-regulated, brushless (With AVR, Alternator with brush)	
Stand-by single-phase power	6.7 kVA (6 kW) / 230V / 29.1A	7.2 kVA (6.5 kW) / 230V / 31.3A
PRP single-phase power	5.5 kVA (5 kW) / 230V / 23.9A	6 kVA (5.4 kW) / 230V / 26A
Dry weight	75 Kg	
Dimensions (LxWxh) mm	770x520x650	
Pressure acoustic	74 dB(A) @ 7m	



air cooled



petrol

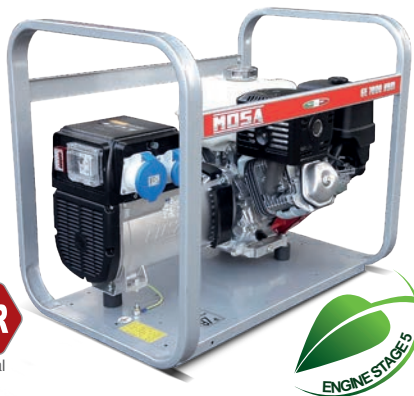


single-phase



manual recoil

GE 7000 HBM



- Engine shut down for low oil level (oil alert)
- Output sockets: 1x230V 32A 2P+T CEE
1x230V 16A 2P+T CEE
- Circuit breaker
- Protective frame
- Voltmeter
- Portable

4-STROKE ENGINE, OHV, NATURAL ASPIRATED

	WITHOUT AVR	WITH AVR
Model	HONDA - GX 390	
Fuel consumption (75% of PRP)	2.4 l/h	
Tank capacity	6.1 l	
Alternator	Synchronous, single-phase, self-excited, self-regulated, brushless (With AVR, Alternator with brush)	
Stand-by single-phase power	6.7 kVA (6 kW) / 230V / 29.1A	7.2 kVA (6.5 kW) / 230V / 31.3A
PRP single-phase power	5.5 kVA (5 kW) / 230V / 23.9A	6 kVA (5.4 kW) / 230V / 26A
Dry weight	76 Kg	
Dimensions (LxWxh) mm	770x520x650	
Pressure acoustic	71 dB(A) @ 7m	



air cooled



petrol



single-phase



manual recoil

GE 8000 BBT



- Engine shut down for low oil level (oil alert)
- Output sockets: 1x 400V 16A 3P+N +T CEE
1x 230V 16A 2P+T CEE
- Circuit breaker
- Protective frame
- Voltmeter
- Portable

4-STROKE ENGINE, OHV, NATURAL ASPIRATED

Model	B&S - XR2100
Fuel consumption (75% of PRP)	2.7 l/h
Tank capacity	6.6 l
Alternator	Synchronous, three-phase, self-excited, self-regulated
Stand-by three-phase power	8 kVA (6.4 kW) / 400V / 11.5A
PRP three-phase power	7 kVA (5.6 kW) / 400V / 10.1A
PRP single-phase power	4 kVA / 230V / 17.3A
Dry weight	79 Kg
Dimensions (LxWxh) mm	770x520x650
Pressure acoustic	74 dB(A) @ 7m



air cooled



petrol



three-phase

manual
recoil

GE 8000 HBT



- Engine shut down for low oil level (oil alert)
- Output sockets: 1x230V 16A 2P+T CEE
1x230V 16A 2P+T Schuko
- Overload thermal shut off
- Battery charger 12 Vcc with fuse protection
- Protective frame
- Voltmeter
- Portable

4-STROKE ENGINE, OHV, NATURAL ASPIRATED

Model	HONDA GX 390
Fuel consumption (75% of PRP)	2.4 l/h
Tank capacity	6.1 l
Alternator	Synchronous, three-phase, self-excited, self-regulated
Stand-by three-phase power	8 kVA (6.4 kW) / 400V / 11.5A
PRP three-phase power	7 kVA (5.6 kW) / 400V / 10.1A
PRP single-phase power	4 kVA / 230V / 17.3A
Dry weight	80 Kg
Dimensions (LxWxh) mm	770x520x650
Pressure acoustic	71 dB(A) @ 7m



air cooled



petrol



three-phase

manual
recoil

NAKED



RANGE

S



High performance, low consumption, reduced noise and vibration levels:
The **iGX** series engines are characterised by variable timing (digital CDI) and increase of the compression ratio.



“STR Governor” electronic regulation (Self Tuning Regulator):
The **iGX** engines have an electronic regulation that operates directly on the regulator throttle valve and ensures an easier start (together with the “Auto Choke” system) and steady rpm even in case of variable loads. The system is independent and does not need batteries: the STR regulator is supplied by coils located under the flywheel.



Automatic starter (Auto Choke):
All engines of the **iGX** series are equipped with an automatic starter device (Auto Choke) for an easier start phase without any manual intervention.



Large “emergency” manual starter for an easier start:
All engines of the **iGX** series are equipped as standard with an “emergency” manual starter to be used in case of low battery and/or malfunction of the electric starting. The large diameter of the starter enables a simple and easier start even compared with the traditional GX engines (40% less strength needed). The starting is also made easier by the new grip.



ENGINE

Equipped with STAGE 5 engine.

TANK

They are equipped as standard with a large tank for high autonomy.



optional AA



- Engine shut down for low oil level (oil alert)
- Sockets: 1x230V 32A 2P+T CEE
1x230V 16A 2P+T CEE
1x230V 16A 2P+T Schuko
- Circuit breaker
- Fuel level indicator
- Protective frame and partially covered frame
- Portable
- Battery charger output 12 Vdc
- AVR as standard (AE)
- Ready for connection to automatic transfer unit EAS (AE)

GE S-5000 BBM

4-STROKE ENGINE, OHV, NATURAL ASPIRATED

Model	B&S - XR1450
Fuel consumption (75% of PRP)	1.9 l/h
Tank capacity	20 l
Alternator	Synchronous, single-phase, self-excited, self-regulated, brushless (With AVR, Alternator with brush)
Stand-by single-phase power	5 kVA (4.5 kW)/ 230V / 21.7A
PRP single-phase power	4 kVA (3.6 kW)/ 230V / 17.4A
Dry weight	76 Kg (AA) 86 Kg (AE)
Dimensions (LxWxh) mm	770x520x650
Pressure acoustic	73 dB(A) @ 7m



air cooled



petrol



single-phase



manual recoil (AA)



Electric Starter (AE)



optional AA



- Engine shut down for low oil level (oil alert)
- Sockets: 1x230V 32A 2P+T CEE
1x230V 16A 2P+T CEE
1x230V 16A 2P+T Schuko
- Circuit breaker
- Fuel level indicator
- Protective frame and partially covered frame
- Portable
- Battery charger output 12 Vdc
- AVR as standard (AE)
- Ready for connection to automatic transfer unit EAS (AE)

GE S-5000 HBM

4-STROKE ENGINE, OHV, NATURAL ASPIRATED

Model	- HONDA GX 270 - HONDA iGX 270
Fuel consumption (75% of PRP)	1.6 l/h
Tank capacity	20 l
Alternator	Synchronous, single-phase, self-excited, self-regulated, brushless (With AVR, Alternator with brush)
Stand-by single-phase power	4.9 kVA (4.4 kW)/ 230V / 21.3A
PRP single-phase power	4 kVA (3.6 kW)/ 230V / 17.4A
Dry weight	76 Kg (AA) 86 Kg (AE)
Dimensions (LxWxh) mm	770x520x650
Pressure acoustic	71 dB(A) @ 7m



air cooled



petrol



single-phase



manual recoil (AA)



Electric Starter (AE)



optional



- Low oil pressure automatic engine shut down (AE)
- Sockets: 1x230V 32A 2P+T CEE
1x230V 16A 2P+T CEE
1x230V 16A 2P+T Schuko
- Circuit breaker
- Fuel level indicator
- Protective frame and partially covered frame
- Portable
- Ready for connection to automatic transfer unit EAS (AE)

GE S-6000 YDM

4-STROKE ENGINE, NATURAL ASPIRATED, DIRECT INJECTION

Model	YANMAR L100N
Fuel consumption (75% of PRP)	1 l/h
Tank capacity	20 l
Alternator	Synchronous, single-phase, self-excited, self-regulated, brushless (With AVR, Alternator with brush)
Stand-by single-phase power	5.7 kVA (5.1 kW)/ 230V / 24.8A
PRP single-phase power	5 kVA (4.5 kW)/ 230V / 21.7A
Dry weight	123 Kg (AA) 133 Kg (AE)
Dimensions (LxWxh) mm	770x520x650
Pressure acoustic	74 dB(A) @ 7m



air cooled



diesel



single-phase



manual recoil (AA)



Electric Starter (AE)

GE S-6500 YDT



4-STROKE ENGINE, NATURAL ASPIRATED, DIRECT INJECTION

Model	YANMAR L100N
Fuel consumption (75% of PRP)	1 l/h
Tank capacity	20 l
Alternator	Synchronous, single-phase, self-excited, self-regulated, brushless (With AVR, Alternator with brush)
Stand-by three-phase power	6.5 kVA (5.2 kW) / 400V / 9.4A
PRP three-phase power	5.7 kVA (4.6 kW) / 400V / 8.2A
PRP single-phase power	4 kVA (3.6 kW) / 230V / 17.4A
Dry weight	127 Kg (AA) 141 Kg (AE)
Dimensions (LxWxh) mm	770x520x650
Pressure acoustic	74 dB(A) @ 7m

- Low oil pressure automatic engine shut down (AE)
- Sockets: 1x400V 16A 3P+N+T CEE
1x230V 16A 2P+T CEE
1x230V 16A 2P+T Schuko
- Circuit breaker
- Fuel level indicator
- Protective frame and partially covered frame
- Ready for connection to automatic transfer unit EAS (AE)

air cooled diesel three-phase manual recoil (AA) Electric Starter (AE)

GE S-7000 BBM



4-STROKE ENGINE, OHV, NATURAL ASPIRATED

	WITHOUT AVR	WITH AVR
Model	B&S - XR2100	
Fuel consumption (75% of PRP)	2.7 l/h	
Tank capacity	20 l	
Alternator	Synchronous, single-phase, self-excited, self-regulated, brushless (With AVR, Alternator with brush)	
Stand-by single-phase power	6.7 kVA (6 kW) / 230V / 29.1A	7.2 kVA (6.5 kW) / 230V / 31.3A
PRP single-phase power	5.5 kVA (5 kW) / 230V / 23.9A	6 kVA (5.4 kW) / 230V / 26A
Dry weight	94 Kg (AA) 104 Kg (AE)	
Dimensions (LxWxh) mm	770x520x650	
Pressure acoustic	74 dB(A) @ 7m	

- Engine shut down for low oil level (oil alert)
- Sockets: 1x230V 32A 2P+T CEE
1x230V 16A 2P+T CEE
1x230V 16A 2P+T Schuko
- Circuit breaker
- Fuel level indicator
- Protective frame and partially covered frame
- Portable
- AVR as standard (AE)
- Ready for connection to automatic transfer unit EAS (AE)

air cooled petrol single-phase manual recoil (AA) Electric Starter (AE)

GE S-7000 HBM



4-STROKE ENGINE, OHV, NATURAL ASPIRATED

	WITHOUT AVR	WITH AVR
Model	HONDA GX 390	HONDA iGX 390
Fuel consumption (75% of PRP)	2.4 l/h	
Tank capacity	20 l	
Alternator	Synchronous, single-phase, self-excited, self-regulated, brushless (With AVR, Alternator with brush)	
Stand-by single-phase power	6.7 kVA (6 kW) / 230V / 29.1A	7.2 kVA (6.5 kW) / 230V / 31.3A
PRP single-phase power	5.5 kVA (5 kW) / 230V / 23.9A	6 kVA (5.4 kW) / 230V / 26A
Dry weight	94 Kg (AA)	104 Kg (AE)
Dimensions (LxWxh) mm	770x520x650	
Pressure acoustic	71 dB(A) @ 7m	

- Engine shut down for low oil level (oil alert)
- Sockets: 1x230V 32A 2P+T CEE
1x230V 16A 2P+T CEE
1x230V 16A 2P+T Schuko
- Circuit breaker
- Fuel level indicator
- Protective frame and partially covered frame
- Portable
- Ready for connection to automatic transfer unit EAS (AE)
- AVR as standard (AE)

air cooled petrol single-phase manual recoil (AA) Electric Starter (AE)



optional AA

- Engine shut down for low oil level (oil alert)
- Sockets: 1x400V 16A 3P+N+T CEE
1x230V 16A 2P+T CEE
1x230V 16A 2P+T Schuko
- Circuit breaker
- Fuel level indicator
- Protective frame and partially covered frame
- Portable
- AVR as standard (AE)
- Ready for connection to automatic transfer unit EAS (AE)

GE S-8000 BBT

4-STROKE ENGINE, OHV, NATURAL ASPIRATED

Model	B&S - XR2100
Fuel consumption (75% of PRP)	2.7 l/h
Tank capacity	20 l
Alternator	Synchronous, single-phase, self-excited, self-regulated, brushless (With AVR, Alternator with brush)
Stand-by three-phase power	8 kVA (6.4 kW)/ 400V / 11.5A
Stand-by three-phase power	7 kVA (5.6 kW)/ 400 V / 10.1A
PRP single-phase power	4 kVA (3.6 kW)/ 230V / 17.4A
Dry weight	98 Kg (AA) 108 Kg (AE)
Dimensions (LxWxh) mm	770x520x650
Pressure acoustic	74 dB(A) @ 7m



air cooled



petrol



three-phase



manual recoil (AA)



Electric Starter (AE)



optional AA

- Engine shut down for low oil level (oil alert)
- Sockets: 1x400V 16A 3P+N+T CEE
1x230V 16A 2P+T CEE
1x230V 16A 2P+T Schuko
- Circuit breaker
- Fuel level indicator
- Protective frame and partially covered frame
- Portable
- AVR as standard (AE)
- Ready for connection to automatic transfer unit EAS (AE)

GE S-8000 HBT

4-STROKE ENGINE, OHV, NATURAL ASPIRATED

Model	HONDA GX 390 HONDA iGX 390
Fuel consumption (75% of PRP)	2.4 l/h
Tank capacity	20 l
Alternator	Synchronous, single-phase, self-excited, self-regulated, brushless (With AVR, Alternator with brush)
Stand-by three-phase power	8 kVA (6.4 kW)/ 400V / 11.5A
PRP three-phase power	7 kVA (5.6 kW)/ 400V / 10.6A
PRP single-phase power	4 kVA (3.6 kW)/ 230V / 17.4A
Dry weight	98 Kg (AA) 108 Kg (AE)
Dimensions (LxWxh) mm	770x520x650
Pressure acoustic	71 dB(A) @ 7m



air cooled



petrol



three-phase



manual recoil (AA)



Electric Starter (AE)

RANGE OPEN FRAME

AVR

AVR

AVR, automatic voltage regulator, is an electronic device that keeps the voltage constant in all working conditions (from no-load to full load).



HANDLING TROLLEY

Low machine weight and specific handling trolley with 2 wheels and 2 handles allow easy manual transport.

ROUNDED EDGES

curved profile design provides protection from the elements and overall protection for the generating set.



FRONT PANEL

A recessed panel protects the sockets and controls from accidental damage whilst a tubular steel frame provides protection for the complete machine

SOLID STRUCTURE

It has a steel structure with motor and alternator mounted on anti-vibration mounts to reduce noise and increase service life.

GE 10000 HZDM



- Low oil pressure automatic engine shut down and high engine temperature
- Suitable for electronic equipments
- Sockets: 1x230 V 32A 2P+T CEE
1x230 V 16A 2P+T CEE
1x230 V 16A 2P+T SCHUKO
- ELCB-GFI (Ground Fault Interruptor)
- Circuit breaker
- Protective frame

4-STROKE ENGINE, DIRECT INJECTION

Model	HATZ - 1D90
Fuel consumption (75% of PRP)	2.5 l/h
Tank capacity	18 l
Alternator	Synchronous, single-phase, self-excited, self-regulated
Stand-by single-phase power	10 kVA (9 kW) / 230 V / 43.5 A
PRP single-phase power	9 kVA (8.1 kW) / 230 V / 39.1 A
Dry weight	215 Kg
Dimensions (LxWxh) mm	1005x610x715
Pressure acoustic	80 dB(A) @ 7m



air cooled



diesel



single-phase



Electric Starter



- Low oil pressure automatic engine shut down
- Suitable for electronic equipments
- Sockets: 1x230 V 32A 2P+T CEE
1x230 V 16A 2P+T CEE
1x230 V 16A 2P+T SCHUKO
- ELCB-GFI (Ground Fault Interruptor)
- Circuit breaker
- Protective frame

GE 11000 HBS

4-STROKE ENGINE, OHV, NATURAL ASPIRATED

Model	HONDA GX 630
Fuel consumption (75% of PRP)	3.9 l/h
Tank capacity	18 l
Alternator	Synchronous, single-phase, self-excited, self-regulated
Stand-by single-phase power	11 kVA (9.9 kW) / 230 V / 47.8 A
PRP single-phase power	10 kVA (9 kW) / 230 V / 43.5 A
Dry weight	145 Kg
Dimensions (LxWxh) mm	935x525x645
Pressure acoustic	74 dB(A) @ 7m



air cooled



petrol



single-phase



Electric Starter



- Low oil pressure automatic engine shut down and high engine temperature
- Sockets: 1x400 V 32A 3P+N+T CEE
2x230 V 32A 2P+T CEE
- ELCB-GFI (Ground Fault Interruptor)
- Circuit breaker
- Protective frame

GE 12000 HZDT

4-STROKE ENGINE, DIRECT INJECTION

Model	HATZ - 1D90
Fuel consumption (75% of PRP)	2.5 l/h
Tank capacity	18 l
Alternator	Synchronous, three-phase, self-excited, self-regulated
Stand-by three-phase power	12 kVA (9.6 kW) / 400 V / 17.3 A
PRP three-phase power	11 kVA (8.8 kW) / 400 V / 15.9 A
PRP single-phase power	6 kVA / 230 V / 26 A
Dry weight	220 Kg
Dimensions (LxWxh) mm	1005x610x715
Pressure acoustic	80 dB(A) @ 7m



air cooled



diesel



three-phase



Electric Starter

GE 12054 HZDT



- Low oil pressure automatic engine shut down and high engine temperature
- Sockets: 1x400 V 16A 3P+N+T CEE IP67
2x230 V 16A 2P+T SCHUKO
- Isometer
- Circuit breaker
- Protective frame

4-STROKE ENGINE, OHV, NATURAL ASPIRATED

Model	HATZ - 1D90
Fuel consumption (75% of PRP)	2.5 l/h
Tank capacity	18 l
Alternator	Synchronous, three-phase, self-excited, self-regulated, brushless (IP54)
Stand-by three-phase power	12 kVA (9.6 kW) / 400 V / 17.3 A
PRP three-phase power	11 kVA (8.8 kW) / 400 V / 15.9 A
PRP single-phase power	6 kVA / 230 V / 26 A
Dry weight	226 Kg
Dimensions (LxWxh) mm	1005x610x715
Pressure acoustic	80 dB(A) @ 7m



air cooled



diesel



three-phase



Electric Starter

GE 13000 HBS



- Low oil pressure automatic engine shut down
- A recessed panel protects the sockets
- Sockets: 1x400V 32A 3P+N+T CEE
2x230V 16A 2P+T CEE
- Circuit breaker
- ELCB-GFI (Ground Fault Interruptor)

4-STROKE ENGINE, OHV, NATURAL ASPIRATED

Model	HONDA GX 630
Fuel consumption (75% of PRP)	3.9 l/h
Tank capacity	18 l
Alternator	Synchronous, three-phase, self-excited, self-regulated
Stand-by three-phase power	13 kVA (10.4 kW) / 400V / 18.7 A
PRP three-phase power	11.5 kVA (9.2 kW) / 400V / 16.6 A
PRP single-phase power	6 kVA / 230 V / 26 A
Dry weight	142 Kg
Dimensions (LxWxh) mm	935x525x645
Pressure acoustic	74 dB(A) @ 7m



air cooled



petrol



three-phase



Electric Starter

GE 13054 HBS



- Low oil pressure automatic engine shut down
- Sockets : 1x400 V 16A 3P+N+T CEE IP67
2x230 V 16A 2P+T SCHUKO
- Isometer
- Circuit breaker
- Protective frame

4-STROKE ENGINE, OHV, NATURAL ASPIRATED

Model	HONDA GX 630
Fuel consumption (75% of PRP)	3.9 l/h
Tank capacity	18 l
Alternator	Synchronous, three-phase, self-excited, self-regulated, brushless (IP54)
Stand-by three-phase power	13 kVA (10.4 kW) / 400 V / 18.7 A
PRP three-phase power	11.5 kVA (9.2 kW) / 400 V / 16.6 A
PRP single-phase power	6 kVA / 230 V / 26 A
Dry weight	160 Kg
Dimensions (LxWxh) mm	935x525x645
Pressure acoustic	74 dB(A) @ 7m



air cooled



petrol



three-phase



Electric Starter

GE 14000 KD/GS



- Low oil pressure automatic engine shut down and high engine temperature
- Sockets: 1x400 V 32A 3P+N+T CEE
1x230 V 32A 2P+T CEE
1x230 V 16A 2P+T Schuko
- ELCB-GFI (Ground Fault Interruptor)
- Circuit breaker
- Ready for connection to automatic transfer unit EAS

4-STROKE ENGINE, DIRECT INJECTION

Model	KOHLER KD 477/2
Fuel consumption (75% of PRP)	2.8 l/h
Tank capacity	18 l
Alternator	Synchronous, three-phase, self-excited, self-regulated
Stand-by three-phase power	15 kVA (12 kW) / 400 V / 21.7 A
PRP three-phase power	13.5 kVA (10.8 kW) / 400 V / 19.5 A
PRP single-phase power	5 kVA / 230 V / 21.7 A
Dry weight	191 Kg
Dimensions (LxWxh) mm	1005x610x715
Pressure acoustic	80 dB(A) @ 7m



air cooled



diesel



three-phase



Electric Starter

OPEN FRAME

RANGE TOTAL COVER



ENGINE PROTECTION

The devices ES or EV ensure the protection of the engine in case of low oil pressure or engine high temperature or low fuel level. The system consists of an electronic PCB, and of an engine stop device: Electrostop (ElettroStop) solenoid valve (Electrovalve).



SAFETY CLOSURE

The control panel is lockable and houses the sockets and machine controls including ELCBGF, circuit breaker and engine protection device.



EAS (AUTOMATIC TRANSFER UNIT)

EAS is a panel that controls the automatic startup of a generator in emergency operation. It performs the AMF function (automatic mains failure) and ATS function (automatic transfer switch). The electronic control unit (AMF) automatically detects the absence and return of the mains power supply, managing both the startup and shutdown of the generator, and the switching of the contactor (ATS).

OUTPUT SOCKETS

The generating sets are available with all voltage options to meet the different requirements of European markets



ENGINE ACCESSIBILITY

Engine cowling side, can be completely opened, which facilitates all maintenance operations.

GE 12000 KSX/GS



- Engine protection ES
- Sockets: 1x230 V 63A 2P+T CEE
1x230 V 32A 2P+T CEE
1x230 V 16A 2P+T CEE
- ELCB-GFI (Ground Fault Interruptor)
- Circuit breaker
- Ready for connection to automatic transfer unit EAS

4-STROKE ENGINE, DIRECT INJECTION

Model	KOHLER KD 477/2
Fuel consumption (75% of PRP)	2.8 l/h
Tank capacity	23 l
Alternator	Synchronous, single-phase, self-excited, self-regulated
Stand-by single-phase power	13.5 kVA (12.1 kW) / 230 V / 58.7 A
PRP single-phase power	12 kVA (10.8 kW) / 230 V / 52.5 A
Dry weight	297 Kg
Dimensions (LxWxh) mm	1320x790x750
Pressure acoustic	71 dB(A) @ 7m



air cooled



diesel



single-phase



Electric Starter



- Engine protection ES
- Sockets: 1x400V 32A 3P+N+T CEE
1x400V 16A 3P+N+TCEE
1x230V 32A 2P+T CEE
1x230V 16A 2P+T CEE
- ELCB-GFI (Ground Fault Interruptor)
- Circuit breaker
- Bundled base
- Ready for connection to automatic transfer unit EAS

GE 14000 KSX/GS

4-STROKE ENGINE, DIRECT INJECTION

Model	KOHLER KD 477/2
Fuel consumption (75% of PRP)	2.8 l/h
Tank capacity	23 l
Alternator	Synchronous, three-phase, self-excited, self-regulated
Stand-by three-phase power	15 kVA (12 kW) / 400 V / 21.7 A
PRP three-phase power	13.5 kVA (10.8 kW) / 400 V / 19.5 A
PRP single-phase power	5 kVA / 230 V / 21.7 A
Dry weight	315 Kg
Dimensions (LxWxh) mm	1320x790x750
Pressure acoustic	71 dB(A) @ 7m



air cooled



diesel



three-phase



Electric Starter



- Engine protection ES
- Sockets: 1x400 V 32A 3P+N+T CEE
2x230 V 32A 2P+T CEE
- Circuit breaker-ELCB-GFI
- Overload thermal shut off
- Ready for connection to automatic transfer unit EAS

GE 20000 KS/GS

4-STROKE ENGINE, DIRECT INJECTION

Model	KOHLER KD 625/2
Fuel consumption (75% of PRP)	4 l/h
Tank capacity	26 l
Alternator	Synchronous, three-phase, self-excited, self-regulated, brushless
Stand-by three-phase power	20 kVA (16 kW) / 400 V / 28.9 A
PRP three-phase power	18 kVA (14.4 kW) / 400 V / 26 A
PRP single-phase power	9 kVA / 230 V / 39.1 A
Dry weight	420 Kg
Dimensions (LxWxh) mm	1455x840x880
Pressure acoustic	74 dB(A) @ 7m



air cooled



diesel



three-phase



Electric Starter

RANGE SX

HOOK

equipped with central lifting hook.



WIDE ACCESSIBILITY TO THE ENGINE

to allow easy maintenance (replacement of air, oil, fuel filters)

BUNDED BASE

able to contain any leaks of Socketsnti liquids in the engine avoiding environmental pollution.

GE 4500 HSX



- Engine shut down for low oil level (oil alert)
- Sockets: 2x230 V 16A 2P+T CEE
- ELCB-GFI (Ground Fault Interruptor)
- Overload thermal shut off
- Ready for connection to automatic transfer unit EAS

4-STROKE ENGINE, OHV, NATURAL ASPIRATED

Model	HONDA GX 270
Fuel consumption (75% of PRP)	1.6 l/h
Tank capacity	13 l
Alternator	Synchronous, single-phase, self-excited, self-regulated, brushless
Stand-by single-phase power	4.9 kVA (4.4 kW) / 230 V / 21.3 A
PRP single-phase power	4 kVA (3.6 kW) / 230 V / 17.4 A
Dry weight	130 Kg
Dimensions (LxWxh) mm	900x570x710
Pressure acoustic	61 dB(A) @ 7m



air cooled



petrol



single-phase



Electric Starter



- Engine protection EV
- Sockets: 1x 230V 32A 2P+T CEE IP67
1x 230V 16A 2P+T CEE IP67
1x 230V 16A 2P+T Schuko
- ELCB-GFI (Ground Fault Interruptor)
- Circuit breaker
- Emergency stop button
- Bunded base
- Ready for connection to automatic transfer unit EAS

GE SX-6000 YDM

4-STROKE ENGINE, DIRECT INJECTION

Model	YANMAR L 100 V
Fuel consumption (75% of PRP)	1.2 l/h
Tank capacity	23 l
Alternator	Synchronous, single-phase, self-excited, self-regulated
Stand-by single-phase power	5.7 kVA (5.1 kW) / 230 V / 24.8 A
PRP single-phase power	5 kVA (4.5 kW) / 230 V / 21.7 A
Dry weight	200 Kg
Dimensions (LxWxh) mm	1040x650x911
Pressure acoustic	68 dB(A) @ 7m



air cooled



diesel



single-phase



Electric Starter



- Engine protection EV
- Sockets: 1x400V 16A 3P+N+T CEE IP67
1x230V 16A 2P+T CEE IP67
1x230V 16A 2P+T Schuko
- ELCB-GFI (Ground Fault Interruptor)
- Circuit breaker
- Emergency stop button
- Bunded base
- Ready for connection to automatic transfer unit EAS

GE SX-6500 YDT

4-STROKE ENGINE, DIRECT INJECTION

Model	YANMAR L 100 V
Fuel consumption (75% of PRP)	1.4 l/h
Tank capacity	23 l
Alternator	Synchronous, three-phase, self-excited, self-regulated
Stand-by three-phase power	6.5 kW (5.2 kW) / 400 V / 9.4 A
PRP three-phase power	5.7 kVA (4.6 kW) / 400 V / 8.2 A
PRP single-phase power	4 kVA / 230 V / 17.4 A
Dry weight	206 Kg
Dimensions (LxWxh) mm	1040x650x911
Pressure acoustic	68 dB(A) @ 7m



air cooled



diesel



three-phase



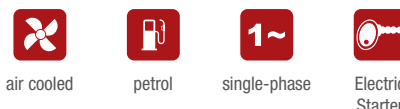
Electric Starter

GE 7000 HSX



4-STROKE ENGINE, OHV, NATURAL ASPIRATED	
Model	HONDA GX 390
Fuel consumption (75% of PRP)	2.4 l/h
Tank capacity	20 l
Alternator	Synchronous, single-phase, self-excited, self-regulated, brushless
Stand-by single-phase power	6.7 kVA (6 kW) / 230 V / 29.1 A
PRP single-phase power	5.5 kVA (5 kW) / 230 V / 23.9 A
Dry weight	155 Kg
Dimensions (LxWxh) mm	1060x570x665
Pressure acoustic	63 dB(A) @ 7m

- Engine shut down for low oil level (oil alert)
- Sockets : 1x230 V 32A 2P+T CEE
1x230 V 16A 2P+T CEE
- ELCB-GFI (Ground Fault Interruptor)
- Circuit breaker
- Ready for connection to automatic transfer unit EAS

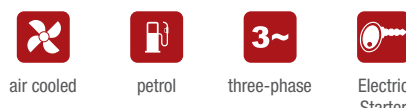


GE 7500 HSX



4-STROKE ENGINE, OHV, NATURAL ASPIRATED	
Model	HONDA GX 390
Fuel consumption (75% of PRP)	2.4 l/h
Tank capacity	20 l
Alternator	Synchronous, three-phase, self-excited, self-regulated
Stand-by three-phase power	7.5 kVA (6 kW) / 400 V / 10.8 A
PRP three-phase power	6.5 kVA (5.2 kW) / 400 V / 9.4 A
PRP single-phase power	4 kVA / 230 V / 17.4 A
Dry weight	165 Kg
Dimensions (LxWxh) mm	1060x570x665
Pressure acoustic	63 dB(A) @ 7m

- Engine shut down for low oil level (oil alert)
- Sockets: 1x400 V 16A 3P+N+T CEE
1x230 V 16A 2P+T CEE
- ELCB-GFI (Ground Fault Interruptor)
- Circuit breaker
- Ready for connection to automatic transfer unit EAS

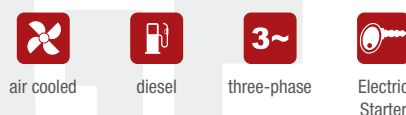


GE SX-7554 YDT



4-STROKE ENGINE, DIRECT INJECTION	
Model	YANMAR L 100V
Fuel consumption (75% of PRP)	1.4 l/h
Tank capacity	23 l
Alternator	Synchronous, three-phase, self-excited, self-regulated, brushless (IP54)
Stand-by three-phase power	7 kVA (5.6 kW) / 400 V / 10 A
PRP three-phase power	6 kVA (4.8 kW) / 400 V / 8.7 A
PRP single-phase power	5 kVA / 230 V / 21.7 A
Dry weight	215 Kg
Dimensions (LxWxh) mm	1040x650x911
Pressure acoustic	68 dB(A) @ 7m

- Digital generator control unit
- Sockets : 1x400V 16A 3P+N+T IP67
2x230V 16A 2P+T Schuko IP68
- Isometer
- Emergency stop button
- Circuit breaker
- Ready for connection to automatic transfer unit EAS



THE SERVICES



SPARE PARTS

A complete range of original spare parts, guaranteed directly by the manufacturer.



ASSISTANCE

A team of specialists, well prepared and available to assure an efficient and resolving service.



WARRANTY

A precise certainty for the customer's satisfaction:
2-year warranty included in the price.



LUBRICANTS

We recommends to use the original PowerLube lubricants.

MOSA



Viale Europa, 59 - 20090 Cusago (MI) - Italy - Tel. +39 02 903521 - Fax +39 02 90390466 - E-mail: info@mosa.it - www.mosa.it